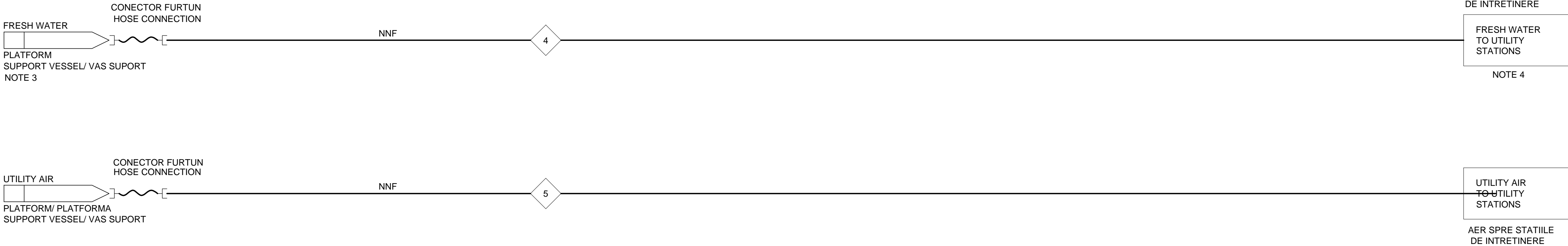
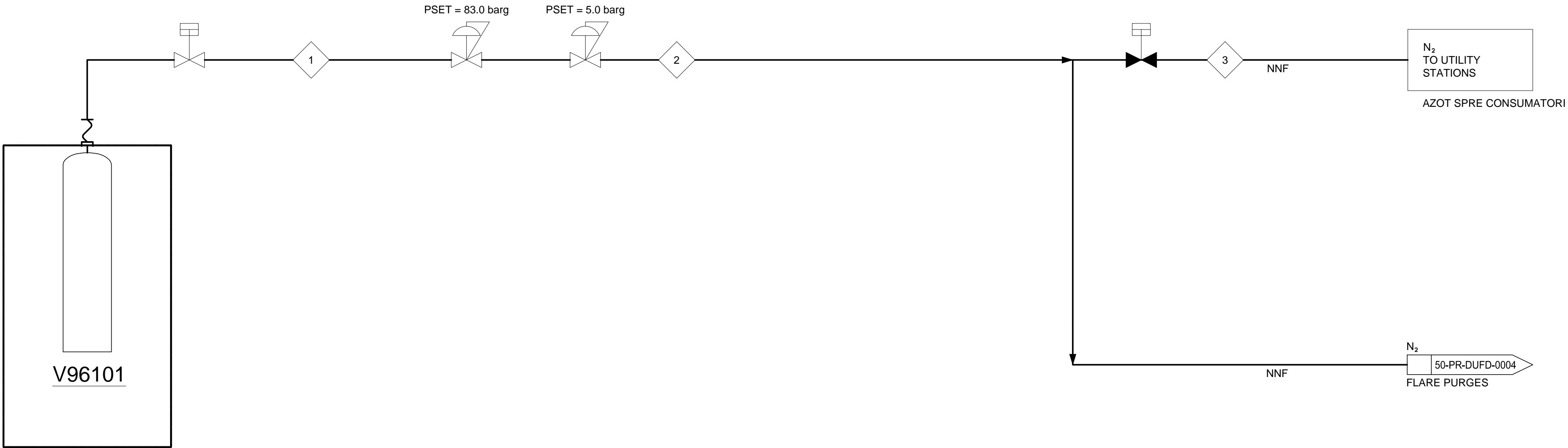


V96101
NITROGEN CYLINDERS BANK
BUTELII AZOT



STREAM No/ FLUX	1	2	3	4	5
PRESSURE/ PRESIUNE (BARG)	100	9	9	7	7
TEMPERATURE/ TEMPERATURA (°C)	12	12	12	12	12
NORMAL FLOW/ DEBIT NORMAL (L/ HR)	NNF	NNF	NNF	NNF	NNF
DESIGN FLOW/ DEBIT PROIECTAT (L/ HR)	230 (HOLD1)	230 (HOLD1)	230 (HOLD1)	10 (HOLD1)	300 (HOLD1)
NOTES/ NOTE					

NOTES:/ NOTE:

- FOR GENERAL NOTES, SYMBOLS AND LEGEND DETAILS, SEE DRAWINGS ND-D-OP-00-PR-DSYM-0001-0001 TO 0009.
PENTRU NOTE GENERALE, SIMBOLURI SI DETALIILE LEGENDEI, VEZI PLANSELE DE LA ND-D-OP-00-PR-DSYM-0001-0001 LA 0009.
- DELETED.
STERS.
- POTABLE WATER PROVIDED VIA HAND-PORTABLE BOTTLES. NO OTHER POTABLE WATER SYSTEM IS PROVIDED.
APA POTABILA FURNIZATA PRIN STICLE. NICIUN ALT SISTEM DE APA POTABILA ASIGURAT.
- SAFETY SHOWERS ARE SELF-CONTAINED UNITS REFILLED VIA HOSE FROM THE NEAREST UTILITY STATION. EYE WASHER ARE SEPARATE STAND ALONE UNITS WITH SELF-CONTAINED POTABLE WATER STORAGE PROVISION.
DUSURILE SUNT UNITATI INDEPENDENTE REINCARCATE PRIN FURTUN DE LA CEA MAI APROPIATA STATIE. STATIILE DE SPALARE A OCHILOR SUNT UNITATI SEPARATE, INDEPENDENTE, CU O PROVIZIE PROPRIE DE APA POTABILA STOCATA.
- DELETED.
STERS.
- DELETED.
STERS.

HOLDS:/ OBSERVATII:

- STREAM DATA./ DATE FLUX.
- DELETED./ STERS.
- DELETED./ STERS.

TRADUCERILE TERMENILOR ÎN ROMÂNĂ SUNT FĂCUTE DUPĂ DESENUL ORIGINAL ÎN ENGLEZĂ



PO1	25.11.22	ISSUED FOR USE/ EMIS PENTRU UZ	EH	IH	FH		
AO1	03.11.22	ISSUED BY IO FOR REVIEW/ REVIZIE	EH	IH	FH		
REV	DATE	REVISION	BY	CHK	ENG	EM	CLIENT



OMV Petrom
The energy for a better life.



PROJECT/ PROIECT
NEPTUN DEEP FEED UPDATE
NEPTUN DEEP ACTUALIZARE FEED

TITLE/ TITLU UTILITY FLOW DIAGRAM UTILITY SUPPORT SYSTEMS DIAGRAMA FLUXULUI DE UTILITATI SISTEMUL SUPORT DE UTILITATI			
REGION/ ASSET BLACK SEA DEEP ASSETS	DRG. SIZE A1	PROJECT No. 000939	SCALE/ SCARA NTS
PLANT SWP	CAD REF. ND-D-IO-50-PR-DUFD-0010-0001		REV. PO1
PLANT No. 50	DRAWING NUMBER ND-D-IO-50-PR-DUFD-0010-0001		
SYSTEM No. -			