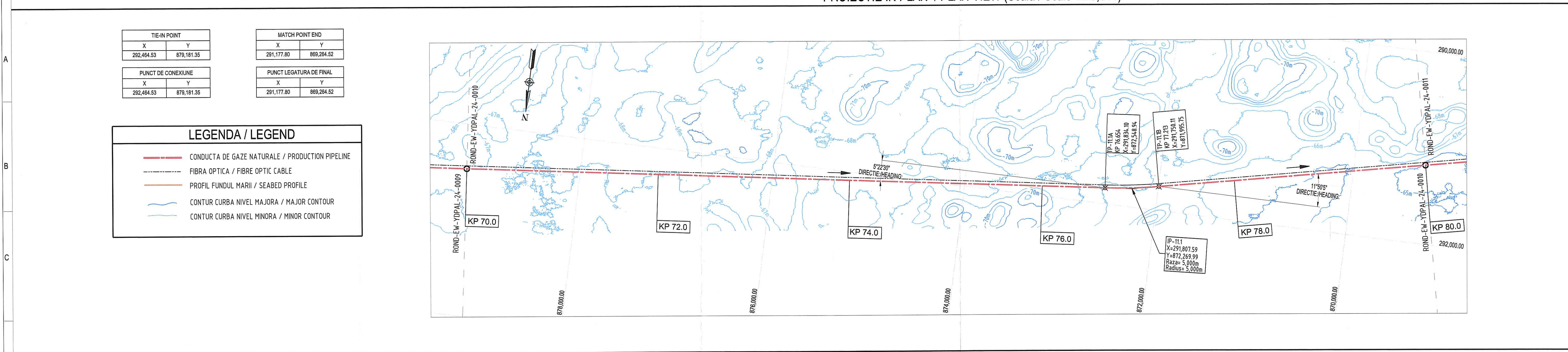
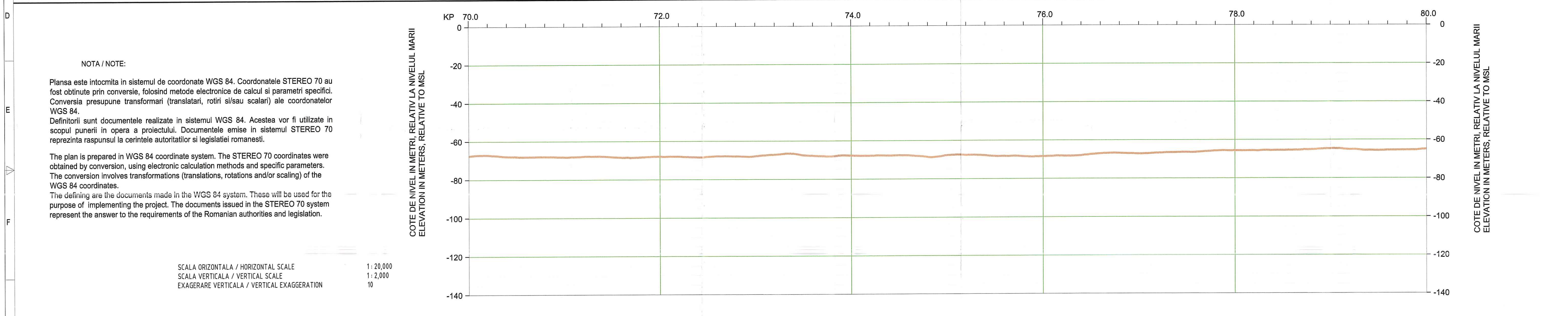


PROIECTIE IN PLAN / PLAN VIEW (Scala / Scale 1:20,000)



PROFIL LONGITUDINAL CONDUCTA / LONGITUDINAL PROFILE ALONG PIPELINE



DATE TEHNICE / ENGINEERING DATA

ELEMENTE TRASEU	ORIENTARE (°N) / RAZA CURBURII (m)	ROUTE ITEMS	5° 22' 30"			11° 50' 5"		
			NU EXISTA / NONE			NU EXISTA / NONE		
DATE CONDUCTA	TRAVERSARE CONDUCTA / CABLU	CABLE / PIPELINE CROSSING	ZONA 4 - NISIP (NOTA 9) / ZONE 4 - SAND (NOTE 9)			ZONA 4 - NISIP (NOTA 9) / ZONE 4 - SAND (NOTE 9)		
	TIP SOL LA SUPRAFATA FUNDULUI MARI	SURFACE SEABED SOIL	DNV SAWL 450 FDU / 762 / 17.5			DNV SAWL 450 FDU / 762 / 17.5		
	TIP OTEL / DIAM. EXT. (mm) / GROSIME PERETE (mm)	STEEL GRADE / O.D. (mm) / WALL THICKNESS (mm)	NU EXISTA / NONE			NU EXISTA / NONE		
	GROS.PERETE DISP. ANTIDEFORMARE (mm) / INTERVAL (m)	BUCKLE ARRESTOR W.T. (mm) / SPACING (m)	FBE / 0.38 - 0.815 / 1.350			FBE / 0.38 - 0.815 / 1.350		
	STRAT ANTI-COROZIV / GROS.(mm) / DENSITATE (kg/m³)	ANTI-CORR. COAT / THICK (mm) / DENSITY (kg/m³)	STRAT INTERIOR PROTECTIE (NOTA 10) / 50 / 1.500 / INTERNAL FLOW COAT (NOTE 10) COATING / 50 / 1.500			STRAT INTERIOR PROTECTIE (NOTA 10) / 50 / 1.500 / INTERNAL FLOW COAT (NOTE 10) COATING / 50 / 1.500		
	STRAT INT. PROT. / GROSIME (µm) / DENSITATE (kg/m³)	INTERNAL COAT. / THICK (µm) / DENSITY (kg/m³)	75 / 3,050			75 / 3,050		
	STRAT BETON- GROSIME (mm) / DENSITATE (kg/m³)	CONCRETE COATING- THICK (mm) / DENSITY (kg/m³)	FBE + POLIURETAN 128 - 224 / FBE + POLYURETHANE / 128 - 224			FBE + POLIURETAN 128 - 224 / FBE + POLYURETHANE / 128 - 224		
	TIP SUDURA / TIP UMPLUTURA / DENSITATE (kg/m³)	FIELD JOINT TYPE / INFILL / DENSITY (kg/m³)	ALUMINIU (40x800) / 161 / 1 LA 10 SEGMENTE / AL (40x800) / 161 / 1 EVERY 10 JOINTS			ALUMINIU (40x800) / 161 / 1 LA 10 SEGMENTE / AL (40x800) / 161 / 1 EVERY 10 JOINTS		
	TIP ANOD / MASA (Kg) / INTERVAL MONTAJ (segmente)	ANODE BRACELETS TYPE / MASS (kg) / SPACING (joints)	9,070			9,070		
	GREUTATE CONDUCTA (kN/m)	PIPELINE WEIGHT (kN/m)	2.568 / 1.39			2.568 / 1.39		
LUCRARI PRE INSTALARE CONDUCTA	ADANCIME DRAGARE (m) / LATIME (m)	PRE-LAY INT. WORKS	NU EXISTA / NONE			NU EXISTA / NONE		
	SUPPORTI / SALTETE BETON	SLEEPERS / MATTRESSES	NU EXISTA / NONE			NU EXISTA / NONE		
	ADANCIME SANT (m)	TRENCHING DEPTH (m)	NU EXISTA / NONE			NU EXISTA / NONE		
	TIP UMPLUTURA / STRAT ACOPERITOR (m)	BACKFILLING TYPE / COVER TOP (m)	NU EXISTA / NONE			NU EXISTA / NONE		
	STRAT PIETRIS	GRAVEL DUMPING	NU EXISTA / NONE			NU EXISTA / NONE		
	LUNGIME	INSTALLATION (m)	70.6			63.7		
	TRONSON	SPAN	44.0			39.0		
	ADMISA	HYDROTEST (m)	45.0			40.0		
	FUNCTIONARE (m)	OPERATION (m)	±10			±10		
	TOLERANTA LA INSTALARE (m)	SPECIFIC REQUIREM.	OTHER			OTHER		
LUCRARI POST INSTALARE CONDUCTA	ADANCIME DRAGARE (m) / LATIME (m)	PRE-LAY INT. WORKS	NU EXISTA / NONE			NU EXISTA / NONE		
	SUPPORTI / SALTETE BETON	SLEEPERS / MATTRESSES	NU EXISTA / NONE			NU EXISTA / NONE		
	ADANCIME SANT (m)	TRENCHING DEPTH (m)	NU EXISTA / NONE			NU EXISTA / NONE		
	TIP UMPLUTURA / STRAT ACOPERITOR (m)	BACKFILLING TYPE / COVER TOP (m)	NU EXISTA / NONE			NU EXISTA / NONE		
	STRAT PIETRIS	GRAVEL DUMPING	NU EXISTA / NONE			NU EXISTA / NONE		
	LUNGIME	INSTALLATION (m)	70.6			63.7		
	TRONSON	SPAN	44.0			39.0		
	ADMISA	HYDROTEST (m)	45.0			40.0		
	FUNCTIONARE (m)	OPERATION (m)	±10			±10		
	TOLERANTA LA INSTALARE (m)	SPECIFIC REQUIREM.	OTHER			OTHER		
CERINTE SPECIFICE	ADANCIME DRAGARE (m) / LATIME (m)	PRE-LAY INT. WORKS	NU EXISTA / NONE			NU EXISTA / NONE		
	SUPPORTI / SALTETE BETON	SLEEPERS / MATTRESSES	NU EXISTA / NONE			NU EXISTA / NONE		
	ADANCIME SANT (m)	TRENCHING DEPTH (m)	NU EXISTA / NONE			NU EXISTA / NONE		
	TIP UMPLUTURA / STRAT ACOPERITOR (m)	BACKFILLING TYPE / COVER TOP (m)	NU EXISTA / NONE			NU EXISTA / NONE		
	STRAT PIETRIS	GRAVEL DUMPING	NU EXISTA / NONE			NU EXISTA / NONE		
	LUNGIME	INSTALLATION (m)	70.6			63.7		
	TRONSON	SPAN	44.0			39.0		
	ADMISA	HYDROTEST (m)	45.0			40.0		
	FUNCTIONARE (m)	OPERATION (m)	±10			±10		
	TOLERANTA LA INSTALARE (m)	SPECIFIC REQUIREM.	OTHER			OTHER		

SE APLICA PREVEDERILE PRIVIND CONFIDENTIALITATEA DIN CONTRACTUL DE CONCESIUNE NEPTUN DEEP SI A CONTRACTULUI DE OPERATII COMUNE AFERENT SI/SAU CONTRACTELOR DE CONFIDENTIALITATE APPLICABLE IN NUIELE EXXONMOBIL EXPLORATION AND PRODUCTION ROMANIA LIMITED

SUBJECT TO CONFIDENTIALITY PROVISIONS OF THE NEPTUN DEEP CONCESSION AGREEMENT AND RELATED JOINT OPERATING AGREEMENT AND/OR THOSE OF THE APPLICABLE NON-DISCLOSURE AGREEMENT ON BEHALF OF EXXONMOBIL EXPLORATION AND PRODUCTION ROMANIA LIMITED.

NOTE

NOTES

DOCUMENTE REFERINTA

REFERENCE DOCUMENTS

NUMAR PLANSA

DESCRIERE

DRAWING NUMBER

DESCRIPTION

SCALA

SCALE BAR

PARAMETRI GEODEZIE SI PROIECTIE

GEODETIC & PROJECTION PARAMETERS

PLAN DE REFERINTA / KEY PLAN

PROIECT NEPTUN DEEP / NEPTUN DEEP PROJECT

ACRONIME

TP - PUNCT SCHIMBARE DIRECTIE

KP - POZITIE KILOMETRICA (CONDUCTA)

IP - PUNCT INFLEXIUNE

ACRONYMS

TP - TURN POINT

KP - KILOMETRIC POINT

IP - INFLEXION POINT

Conform legislatiei romanesti, virgula si punctul sunt utilizate invers, pentru definirea zecimalilor.

Dimensions in the US system have been defined as follows: The comma symbol has been used to separate digit inside the numbers when the digit define hundreds, thousands or tens depending on the case. The digit of decimals are separated by a point. In according with the rules in Romania the coma and point are use in opposite way for defined the digit inside of number. For this reason all the digit inside of number after point will be read like decimals.

2 15DEC17 RE-ISSUED FOR IFD FK|EP|SS|JG

1 26SEP17 RE-ISSUED FOR IFD FK|EP|SS|JG

0 04AUG17 ISSUE FOR IFD RO|EP|SS|JG

CONDUCTA DE GAZE NATURALE 30" 30-INCH PRODUCTION PIPELINE

FISA ALINIAMENT ALIGNMENT SHEET

FISA NR. 008 DIN 016 SHEET 008 OF 016

1 : 20,000 ROND-EW-YDPAL-24-0010-C DTAC - 2-D

SCALE / SCALE NR. PLANSA / DWG. NO. FAZA / PHASE / REV. / REV.